

Agilent GPC/SEC Software Sample GPC Analysis Report



Agilent Technologies

SMA For

Workspace Details

Workspace name Poly lactide
Location C:\ProgramData\Agilent Technologies\GPC\Workspaces\Poly lactide\
Comments
Created by Administrator at 13:44:31 on 15 June 2015

Sample Properties

Sample name SMA For
File name ICF_27_07_2020-0008.sample
Collected by GPC at 13:50:05 on 27 July 2020
Instrument name Instrument 1

Column Calibration Details

Name PSty 2020 June
Created by GPC at 13:15:08 on 15 June 2020
Last modified by GPC at 13:16:38 on 15 June 2020
Comments GPC Column Calibration created 15 June 2020 by GPC
GPC Column Calibration amended 15 June 2020 by GPC
GPC Column Calibration amended 15 June 2020 by GPC

| | | | |
|--------------------------|--|---------------------------|-----------|
| Calibration Type | Narrow Standard | Curve Fit Used | 3 |
| Calibration Curve | $y = -0.002444x^3 + 0.107x^2 - 1.916x + 16.88$ | | |
| High Limit MW RT (mins) | 11.06667 | Low Limit MW RT (mins) | 17.30000 |
| High Limit MW (g/mol) | 299400 | Low Limit MW (g/mol) | 1260 |
| Flow Rate Marker Name | | Flow Marker RT (mins) | 0.00000 |
| K (Input) ((10e-5) dL/g) | 14.100 | | |
| Alpha (Input) | 0.700 | | |
| Residual Sum Of Squares | 0.00155214 | Corrected Sum Of Squares | 5.26776 |
| Coeff. Of Determination | 0.999705 | Standard Y Error Estimate | 0.0176189 |
| Linear Correlation Coeff | -0.999574 | | |

Column Calibration Data Points

| Point | Peak Max RT (mins) | MW | Log MW | Point in Use? | Percent Error |
|-------|--------------------|--------|--------|---------------|---------------|
| 1 | 11.06667 | 299400 | 5.48 | Yes | 3.40 |
| 2 | 11.66667 | 151700 | 5.18 | Yes | -4.99 |
| 3 | 12.60000 | 66350 | 4.82 | Yes | -1.58 |
| 4 | 13.26667 | 38100 | 4.58 | Yes | 0.64 |
| 5 | 14.10000 | 19880 | 4.30 | Yes | 4.91 |
| 6 | 14.88333 | 9920 | 4.00 | Yes | -0.30 |
| 7 | 15.71667 | 4920 | 3.69 | Yes | -1.45 |
| 8 | 16.55000 | 2360 | 3.37 | Yes | -3.33 |
| 9 | 17.30000 | 1260 | 3.10 | Yes | 2.29 |

Analyst:

Date:

Checked By:

Date:

Agilent GPC/SEC Software Sample GPC Analysis Report



Agilent Technologies

Processing Parameters

Method Last modified by Administrator at 13:44:30 on 15 June 2015
 Using Flow Rate Correction No
 Mark-Houwink K ((10e-5) dL/g) 14.100
 Mark-Houwink Alpha 0.700
 Concentration Detector Used in Analysis RI
 Injection volume (µL) 100.00
 Flow rate (mL/min) 1.00

MW Ranges Method

Calculate MW Ranges No

Percentage Fractions Method

Calculate Percentage Fractions No

Results

Analysed by GPC at 15:29:40 on 27 July 2020
 Comments

Molecular Weight Averages

| Peak | Mp (g/mol) | Mn (g/mol) | Mw (g/mol) | Mz (g/mol) | Mz+1 (g/mol) | Mv (g/mol) | PD |
|--------|------------|------------|------------|------------|--------------|------------|-------|
| Peak 1 | 5738 | 4961 | 5932 | 6972 | 8076 | 6814 | 1.196 |

Peak Information

| | Start (mins) | End (mins) |
|-------------------|--------------|------------|
| Baseline region 1 | 2.63333 | 9.08333 |
| Baseline region 2 | 29.16667 | 37.03333 |
| Peak 1 | 14.21667 | 17.05000 |

Peak Trace Information

| Peak | Trace | Peak Max RT (mins) | Peak Area (mV.s) | Peak Height (mV) |
|--------|--------|--------------------|------------------|------------------|
| Peak 1 | RI | 15.55000 | 1536.757 | 21.738 |
| Peak 1 | VS DP | 15.50000 | 1301.795 | 15.117 |
| Peak 1 | VS IP | 15.55000 | 13.290 | 0.498 |
| Peak 1 | LS 90° | 15.46667 | 335.263 | 4.736 |
| Peak 1 | LS 15° | 15.46667 | 90.017 | 1.361 |

Analyst:

Date:

Checked By:

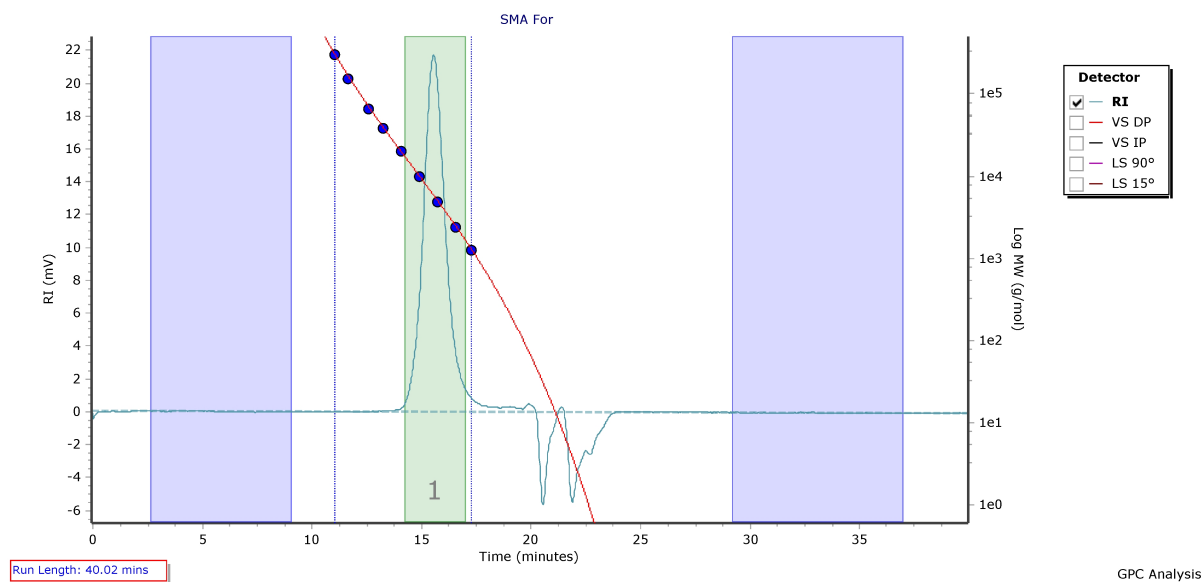
Date:

Agilent GPC/SEC Software Sample GPC Analysis Report



Agilent Technologies

Chromatogram Plot



Analyst:

Date:

Checked By:

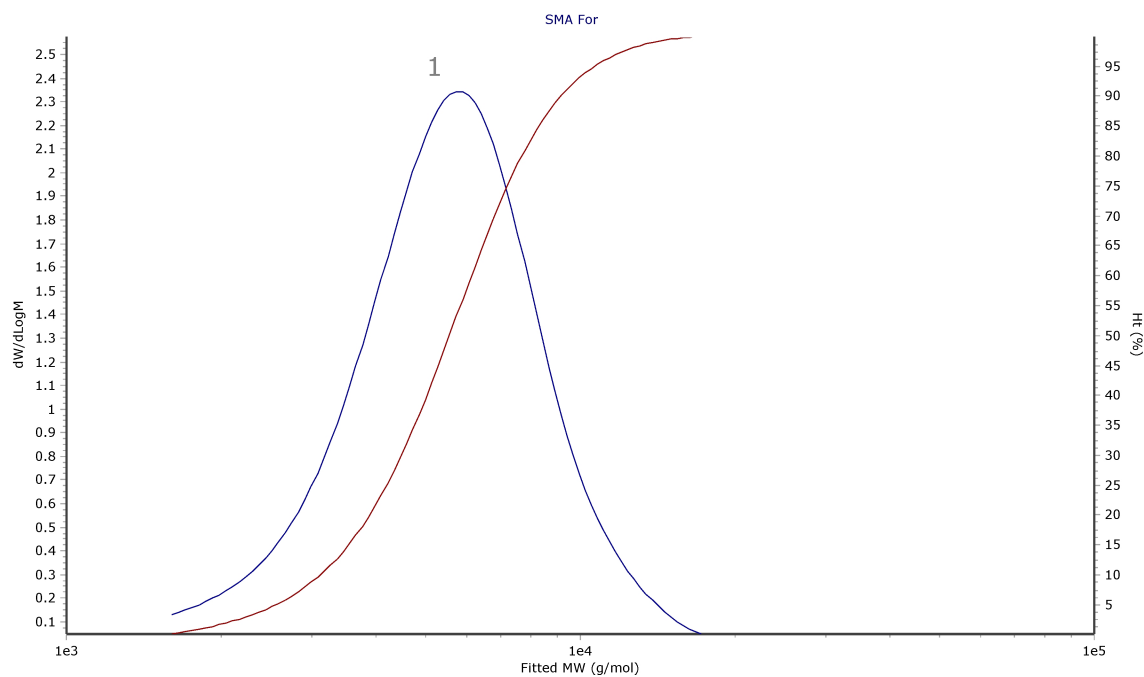
Date:

Agilent GPC/SEC Software Sample GPC Analysis Report



Agilent Technologies

Distribution Plot



Analyst:

Date:

Checked By:

Date: